

Ligature Solutions

Titanium & Polymer Ligation Systems

Our Vision

"True to our vision **INNOVATING TRADITION**, it has always been our goal to not only provide our customers and healthcare professionals with an industry-leading value proposition through continuous innovation in our products and processes.

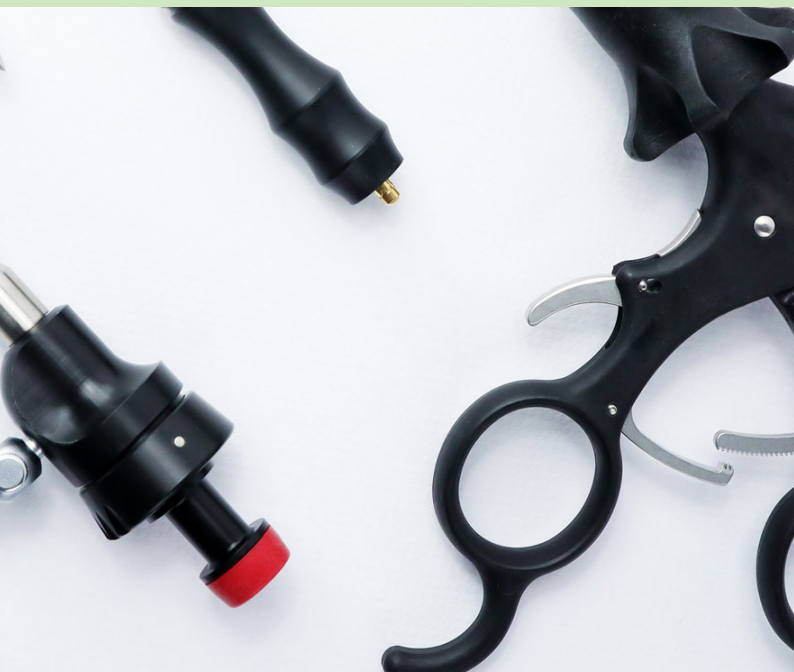
Ackermann

We believe that it is equally important to not lose sight of our roots and to preserve the craftsmanship that has been perfected over generations as an established family business. This enables us to maintain a productive and sustainable home for our staff and to improve clinical outcomes every single day in over 100 countries around the world."

Peter Grassl, CEO

+ 20k SKUs

As **Full-Range-System Manufacturer** we are able to provide you with a coherent product portfolio - from endoscopy to ligation, from implantology to general surgery.



Capabilities

+ Manufacturing

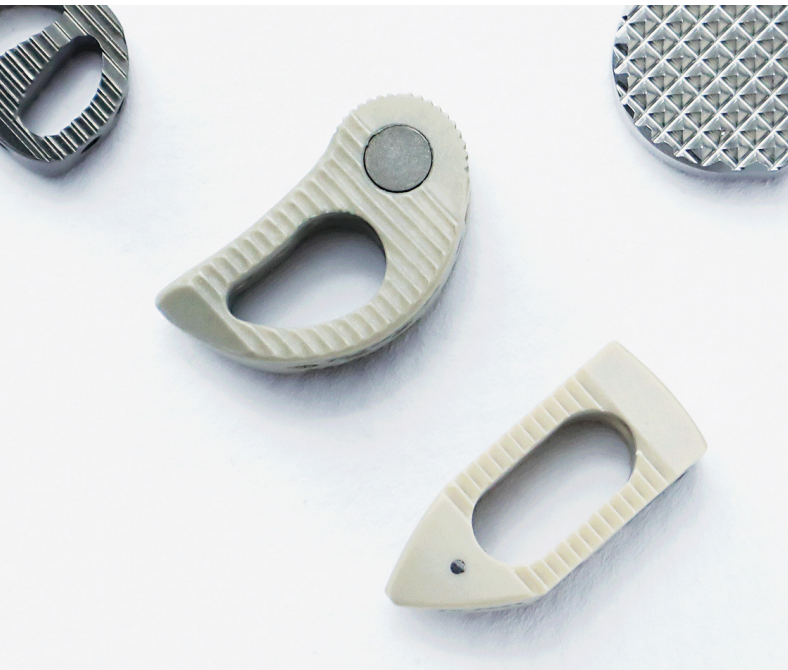
Surgical Instruments, Units, Implants, Optics

+ Regulatory

ISO 13485:2016, US FDA, CFDA, ANVISA,
COFEPRIS

+ Service

+ R&D



Global Player

Sales subsidiaries located in
Greece, India, USA & Mexico



Serving over
100
Countries

More than
80
Employees



3
Manufacturing
Sites

400
Strategic
Partners



Table of Contents

Product Range at a Glance



Europclip™ Line

Clips

Europclip™ Titanium Haemostatic Clips p. 6

Appliers

Open Surgery Appliers for Europclips™ p. 8

Endo Surgery Appliers for Europclips™ p. 10

Europclip™ Design & Compatibility p. 14

VeSeal™ Line

Clips

VeSeal™ Titanium Haemostatic Clips p. 16

Appliers

Open Surgery Appliers for VeSeal™ Clips p. 18

Endo Surgery Appliers for VeSeal™ Clips p. 20

VeSeal™ Design & Compatibility p. 24

Polyclip™ Line

Clips

Polyclip™ Non-Absorbable Polymer Clips p. 26

Appliers & Removers

Open Surgery Appliers / Removers p. 28

Endo Surgery Appliers / Removers p. 30

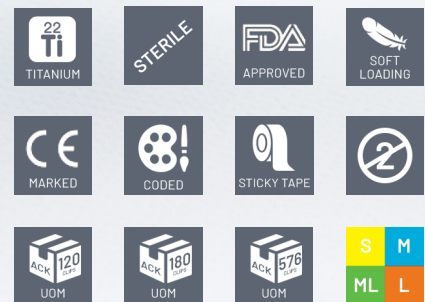
Polyclip™ Design & Compatibility p. 34



Europclip™ Titanium Haemostatic Clips

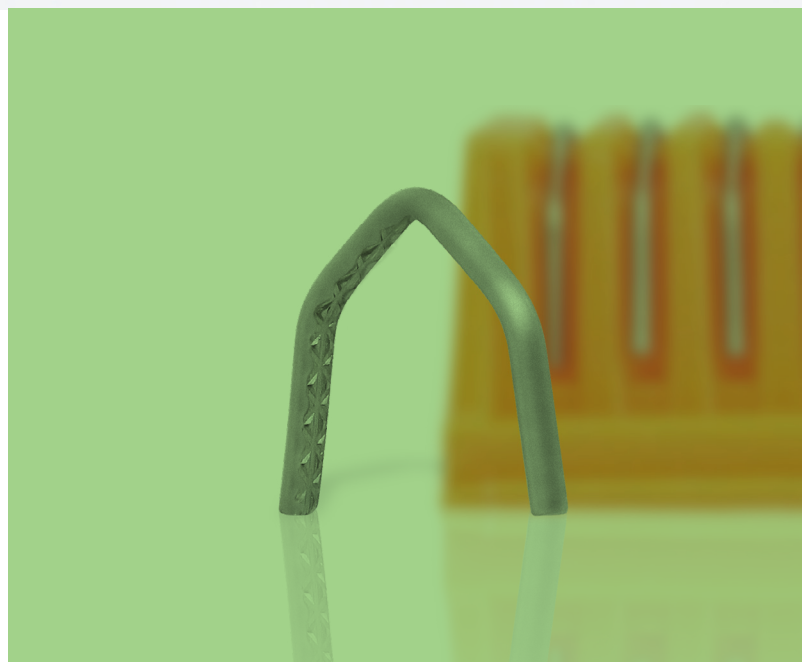
Key Features

- Chevron shape design for **„tip-first“ closing action** allowing for secure and precise positioning, even on delicate structures while reducing the risk of tissue slippage
- **Unique inner cross-serration** to maximize contact surface ensuring secure but less traumatic vessel sealing
- **Heart-shaped profile** for reliable vessel occlusion also reducing the risk of scissoring



... more Features

- Medical grade titanium for maximized biocompatibility
- Soft-load cartridge design for convenient loading action
- 100% made in Germany
- Color coded cartridges for convenient clip size and applier identification
- Sterile packed for immediate use
- Multiple packaging configurations
- Adhesive at the back of the cartridge for easy fixation providing precise handling

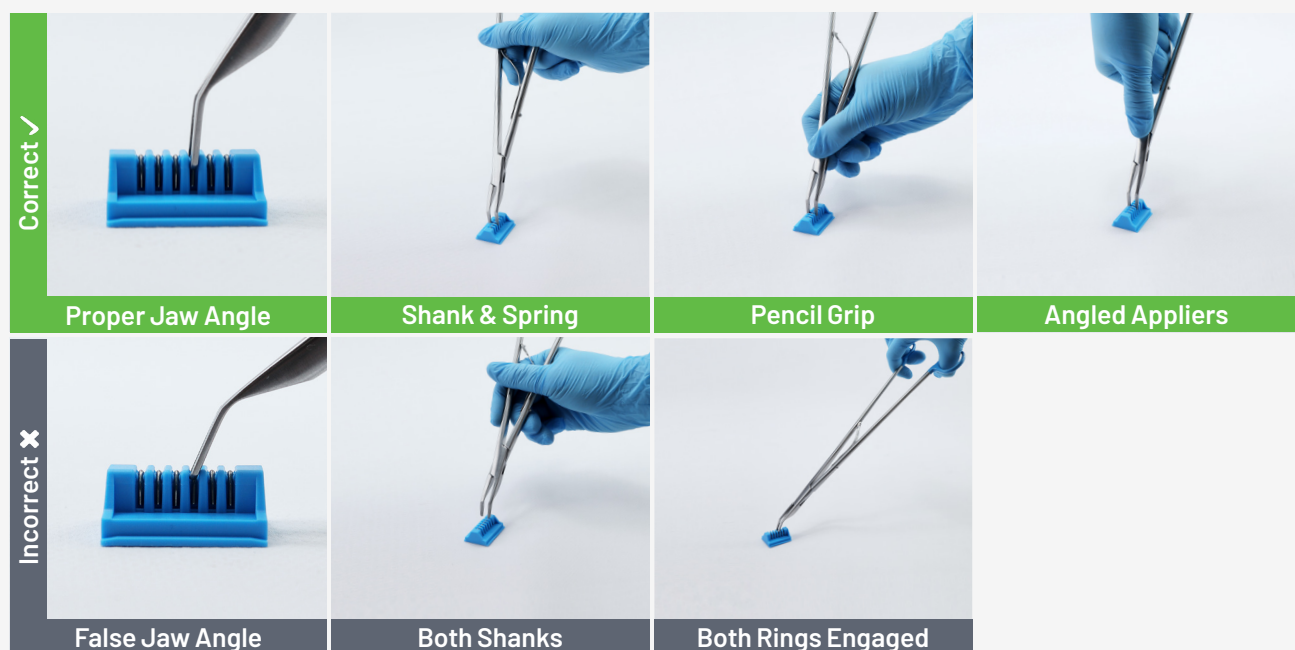


Europclip™ Titanium Haemostatic Clips



	Pcs./Cartdrige		Cartridges/Box			Pcs./Box			Color coding	Item no.
	6	24	20	24	30	120	180	576		
Small Europclips™	•		•			•			●	AI74CS6
Small Europclips™	•				•		•		●	AI74CS6-30C
Small Europclips™		•		•			•		●	AI74CS6/24
Medium Europclips™	•		•			•			●	AI74CM6
Medium Europclips™	•				•		•		●	AI74CM6-30C
Medium Europclips™		•		•			•		●	AI74CM6/24
Medium-large Europclips™	•		•			•			●	AI74CML6
Medium-large Europclips™	•				•		•		●	AI74CML6-30C
Medium-large Europclips™		•		•			•		●	AI74CML6/24
Large Europclips™	•		•			•			●	AI74CL6
Large Europclips™	•				•		•		●	AI74CL6-30C
Large Europclips™		•		•			•		●	AI74CL6/24

Handling of the Clips with the Appliers



Europclip™ Open Surgery Appliers

Key Features

- **Diamond dusted** jaws for maximum clip grip and supreme application properties
- Precision milled jaws, perfectly aligned for lasting performance
- Delicate, **slim tip** design for convenient maneuverability

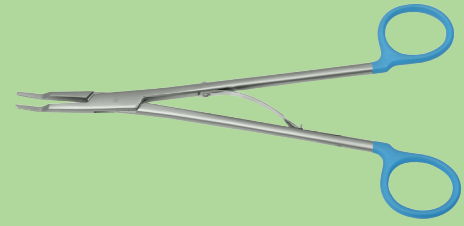


... more Features

- Complete range of different working lengths and jaw patterns
- Color-coded ring handles for simplified identification
- Disengageable spring for secure cleaning and reprocessing
- Medical grade high-quality stainless steel



Straight Open Surgery Appliers



	Length			Color coding	Item no.
	15 cm / 6"	19 cm / 8"	28 cm / 11"		
Open surgery appliers for small Europclips™, straight jaws	•			•	AI-321530DD
Open surgery appliers for small Europclips™, straight jaws		•		•	AI-321532DD
Open surgery appliers for small Europclips™, straight jaws			•	•	AI-321536DD
Open surgery appliers for medium Europclips™, straight jaws	•			•	AI-321524DD
Open surgery appliers for medium Europclips™, straight jaws		•		•	AI-321526DD
Open surgery appliers for medium Europclips™, straight jaws			•	•	AI-321522DD
Open surgery appliers for medium-large Europclips™, straight jaws		•		•	AI-321540DD
Open surgery appliers for medium-large Europclips™, straight jaws			•	•	AI-321542DD
Open surgery appliers for large Europclips™, straight jaws		•		•	AI-321550DD
Open surgery appliers for large Europclips™, straight jaws			•	•	AI-321554DD

Right-Angled Open Surgery Appliers



	Length		Color coding	Item no.
	19 cm / 8"	28 cm / 11"		
Open surgery appliers for small Europclips™, right-angled jaws	•		•	AI-321534DD
Open surgery appliers for medium Europclips™, right-angled jaws	•		•	AI-321520DD
Open surgery appliers for medium Europclips™, right-angled jaws		•	•	AI-321528DD
Open surgery appliers for medium-large Europclips™, right-angled jaws	•		•	AI-321544DD
Open surgery appliers for medium-large Europclips™, right-angled jaws		•	•	AI-321546DD
Open surgery appliers for large Europclips™, right-angled jaws	•		•	AI-321552DD
Open surgery appliers for large Europclips™, right-angled jaws		•	•	AI-321556DD

Europclip™ Endo Surgery Appliers

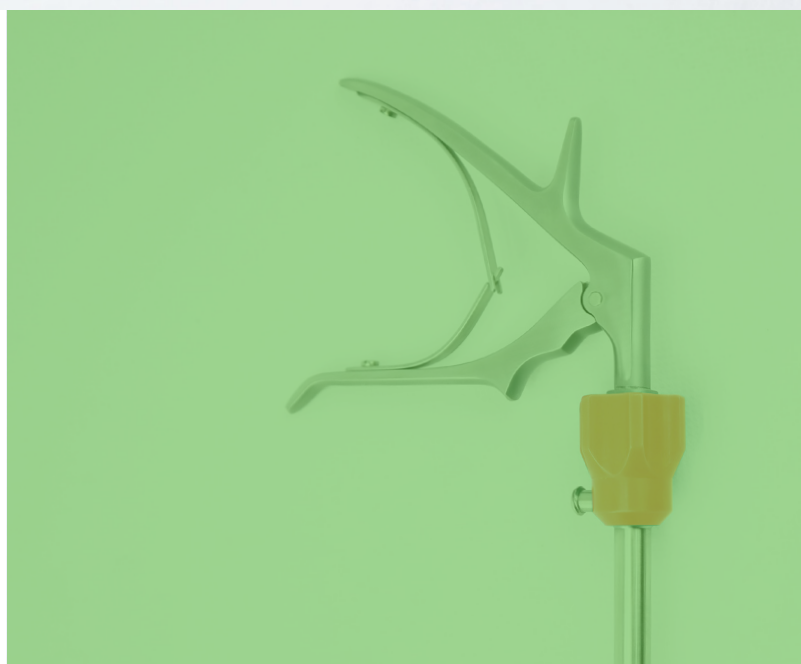
Key Features

- Solid **double-action jaw mechanism** for extremely precise and reliable closing action
- **Diamond dusted** jaws for maximum clip grip
- Multiple **handle options** to meet every physician's preference
- **No backlash** when activated in addition to tightly tolerated jaw dimensions

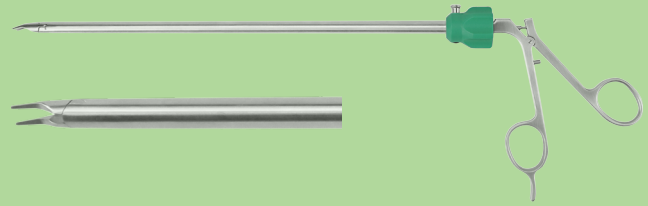


... more Features

- Flush port for validated cleaning and reprocessing
- 360° color coded rotating knob with audio and tactile feedback
- Perfectly weight-balanced
- Bariatric instruments available on request

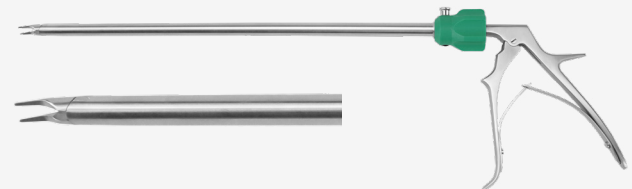


Pistol Handle Appliers for Endo Surgery



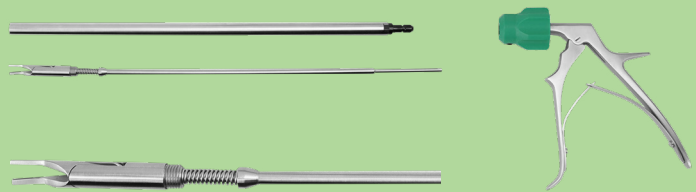
	Diameter			Color coding	Item no.
	Ø 5 mm	Ø 10 mm	Ø 12.5 mm		
Endo Appliers for small Europclips™, pistol handle, rotatable, 330 mm	•			Yellow	13-1613-105AS
Endo Appliers for medium Europclips™, pistol handle, rotatable, 330 mm		•		Blue	13-1610AS
Endo Appliers for medium-large Europclips™, pistol handle, rotatable, 330 mm		•		Green	13-1615AS
Endo Appliers for large Europclips™, pistol handle, rotatable, 330 mm			•	Orange	13-1613-106AS

Townsend Handle Appliers for Endo Surgery



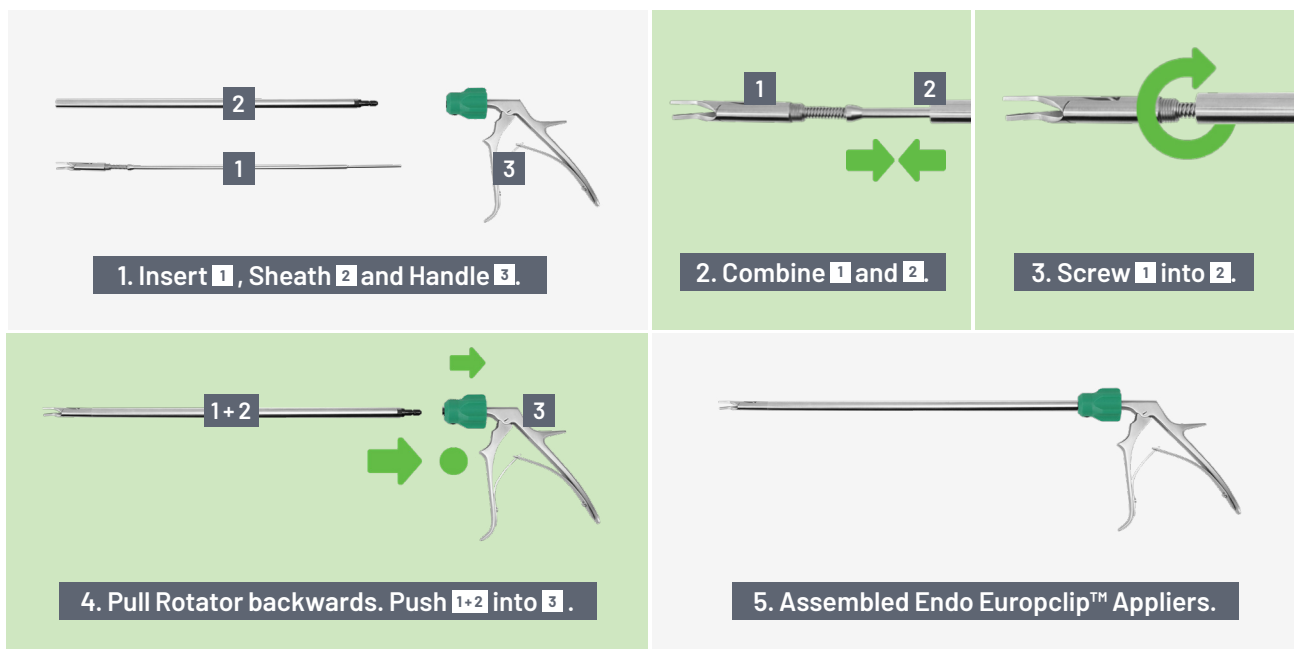
	Diameter			Color coding	Item no.
	Ø 5 mm	Ø 10 mm	Ø 12.5 mm		
Endo Appliers for small Europclips™, townsend handle, rotatable, 330 mm	•			Yellow	13-1613-105A
Endo Appliers for medium Europclips™, townsend handle, rotatable, 330 mm		•		Blue	13-1610A
Endo Appliers for medium-large Europclips™, townsend h., rotatable, 330 mm		•		Green	13-1615A
Endo Appliers for large Europclips™, townsend handle, rotatable, 330 mm			•	Orange	13-1613-106A

Detachable Appliers for Endo Surgery



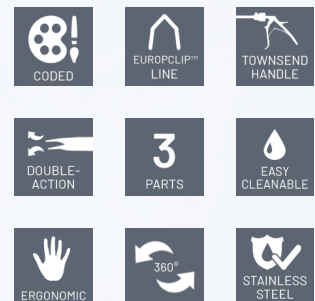
	Diameter			Color coding	Item no.
	Ø 5 mm	Ø 10 mm	Ø 12.5 mm		
Endo Appliers for small Europclips™, townsend handle, rot., dem., 330 mm	•			Yellow	13-1613-105AZ
Endo Appliers for medium Europclips™, townsend handle, rot., dem., 330 mm		•		Blue	13-1610AZ
Endo Appliers for medium-large Europclips™, townsend h., rot., dem., 330 mm		•		Green	13-1615AZ
Endo Appliers for large Europclips™, townsend handle, rot., dem., 330 mm			•	Orange	13-1613-106AZ

How to assemble detachable Endo Clip Appliers



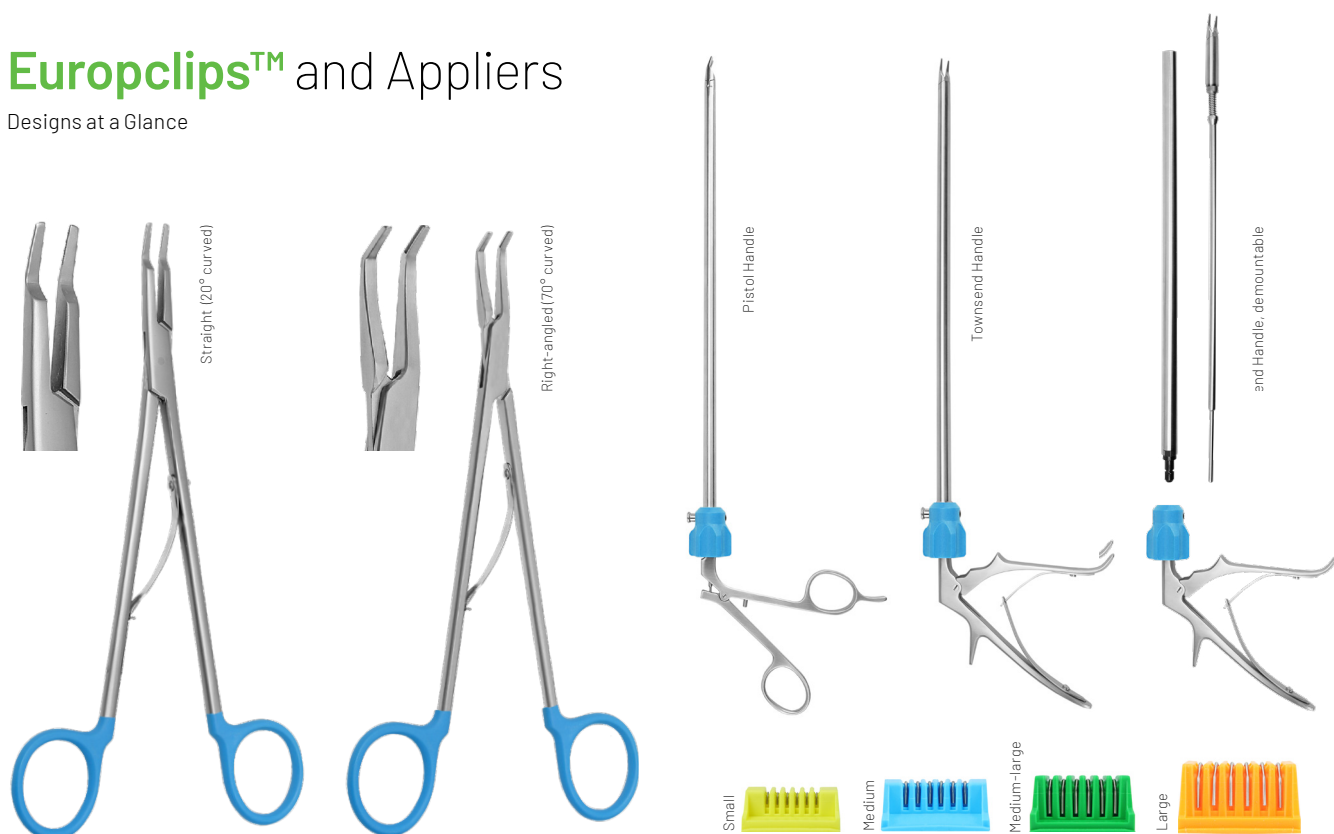
... Key Features

- 3-piece **take-apart system**
- **Quick and intuitive** assembly /disassembly
- **Enhanced cleaning** and reprocessing abilities
- Ergonomic Townsend-handle design
- **No backlash** when activated in addition to tightly tolerated jaw dimensions
- Solid **double-action jaw mechanism** for extremely precise and reliable closing action
- 360° color coded rotating knob with **audio and tactile feedback**
- Perfectly weight-balanced
- Bariatric instruments available on request



Europclips™ and Appliers

Designs at a Glance



Compatibility Matrix

For Europclips™ and Appliers

	Color coding of item	Item no.
Small Europclips™, 120 clips / box	●	AI74CS6
Small Europclips™, 180 clips / box	●	AI74CS6-30C
Small Europclips™, 576 clips / box	●	AI74CS6/24
Open surgery appliers for small Europclips™, straight jaws, 15 cm / 6 "	●	AI-321530DD
Open surgery appliers for small Europclips™, straight jaws, 19 cm / 8 "	●	AI-321532DD
Open surgery appliers for small Europclips™, straight jaws, 28 cm / 11 "	●	AI-321536DD
Open surgery appliers for small Europclips™, right-angled jaws, 19 cm / 8 "	●	AI-321534DD
Endo Appliers for small Europclips™, pistol handle, rotatable, Ø 5 mm, 330 mm	●	13-1613-105AS
Endo Appliers for small Europclips™, townsend handle, rotatable, Ø 5 mm, 330 mm	●	13-1613-105A
Medium Europclips™, 120 clips / box	●	AI74CM6
Medium Europclips™, 180 clips / box	●	AI74CM6-30C
Medium Europclips™, 576 clips / box	●	AI74CM6/24
Open surgery appliers for medium Europclips™, straight jaws, 15 cm / 6 "	●	AI-321524DD

	Color coding of item	Item no.
	●	
Open surgery appliers for medium Europclips™, straight jaws, 19 cm / 8"	●	AI-321526DD
Open surgery appliers for medium Europclips™, straight jaws, 28 cm / 11"	●	AI-321522DD
Open surgery appliers for medium Europclips™, right-angled jaws, 19 cm / 8"	●	AI-321520DD
Open surgery appliers for medium Europclips™, right-angled jaws, 28 cm / 11"	●	AI-321528DD
Endo Appliers for medium Europclips™, pistol handle, rotatable, Ø 10 mm, 330 mm	●	13-1610AS
Endo Appliers for medium Europclips™, townsend handle, rotatable, Ø 10 mm, 330 mm	●	13-1610A
Endo Appliers for medium Europclips™, townsend handle, rot., demountable, Ø 10 mm, 330 mm	●	13-1610AZ
Medium-large Europclips™, 120 clips / box	●	AI74CML6
Medium-large Europclips™, 180 clips / box	●	AI74CML6-30C
Medium-large Europclips™, 576 clips / box	●	AI74CML6/24
Open surgery appliers for medium-large Europclips™, straight jaws, 19 cm / 8"	●	AI-321540DD
Open surgery appliers for medium-large Europclips™, straight jaws, 28 cm / 11"	●	AI-321542DD
Open surgery appliers for medium-large Europclips™, right-angled jaws, 19 cm / 8"	●	AI-321544DD
Open surgery appliers for medium-large Europclips™, right-angled jaws, 28 cm / 11"	●	AI-321546DD
Endo Appliers for medium-large Europclips™, pistol handle, rotatable, Ø 10 mm, 330 mm	●	13-1615AS
Endo Appliers for medium-large Europclips™, townsend handle, rotatable, Ø 10 mm, 330 mm	●	13-1615A
Endo Appliers for medium-large Europclips™, townsend handle, rot., demount., Ø 10 mm, 330 mm	●	13-1615AZ
Large Europclips™, 120 clips / box	●	AI74CL6
Large Europclips™, 180 clips / box	●	AI74CL6-30C
Large Europclips™, 576 clips / box	●	AI74CL6/24
Open surgery appliers for large Europclips™, straight jaws, 19 cm / 8"	●	AI-321550DD
Open surgery appliers for large Europclips™, straight jaws, 28 cm / 11"	●	AI-321552DD
Open surgery appliers for large Europclips™, right-angled jaws, 19 cm / 8"	●	AI-321554DD
Open surgery appliers for large Europclips™, right-angled jaws, 28 cm / 11"	●	AI-321556DD
Endo Appliers for large Europclips™, pistol handle, rotatable, Ø 12.5 mm, 330 mm	●	13-1613-106AS
Endo Appliers for large Europclips™, townsend handle, rotatable, Ø 12.5 mm, 330 mm	●	13-1613-106A
Endo Appliers for large Europclips™, townsend handle, rot., demountable, Ø 12.5 mm, 330 mm	●	13-1613-106AZ

VeSeal™ Titanium Haemostatic Clips

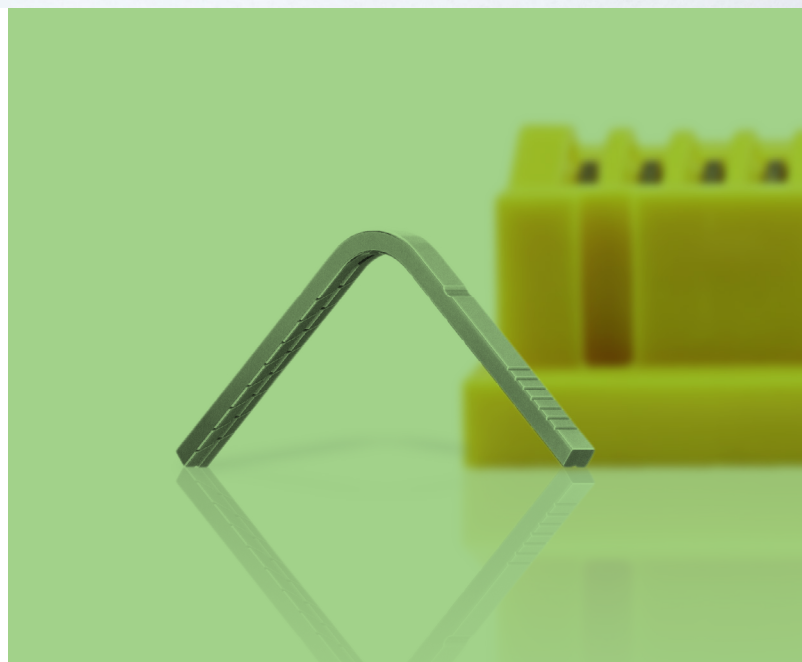
Key Features

- V-shape clip design featuring a **wide proximal opening** and perfect **parallel alignment** once closed
- Special 45° **transverse grooves** on the inner surface of the clip for safe on-structure fixation and reduced risk of dislodgement
- Structural **inflexion points** control clip closure at pre-defined angles for consistent performance



... more Features

- 100% made in Germany
- Color coded cartridges for convenient clip size and applier identification
- Sterile packed for immediate use
- Optional adhesive at the back of the cartridge for easy fixation providing precise handling



VeSeal™ Titanium Haemostatic Clips



	Colour coding	Item no.
Small VeSeal™ clips, 6 pcs./cartridge, 18 cartridges/box, 108 clips/box	●	AI74CS6ETH
Medium VeSeal™ clips, 6 pcs./cartridge, 18 cartridges/box, 108 clips/box	○	AI74CM6ETH
Medium-large VeSeal™ clips, 6 pcs./cartridge, 18 cartridges/box, 108 clips/box	●	AI74CML6ETH
Large VeSeal™ clips, 6 pcs./cartridge, 18 cartridges/box, 108 clips/box	●	AI74CL6ETH

VeSeal™ Open Surgery Appliers

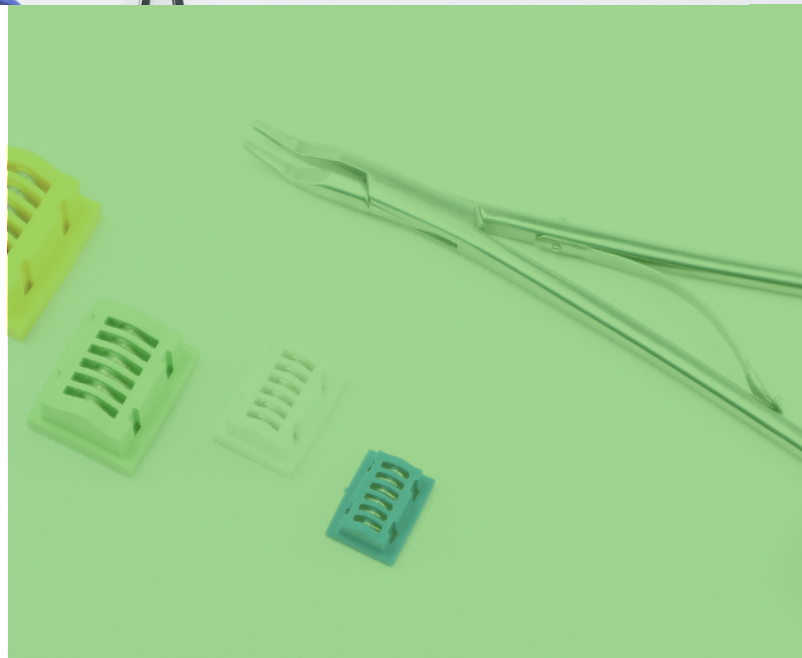
Key Features

- Special **grooves inside the jaw** to provide a perfect fit with the clip and, therefore, secure and consistent loading and application
- Smooth and slim tip design for **reduced trauma**
- **Balanced force transmission** due to perfectly designed and tightly tolerated geometries

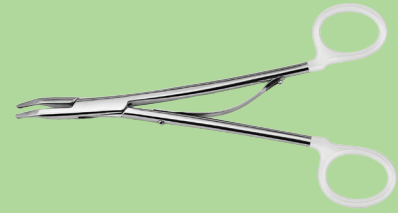


... more Features

- Complete range of different working lengths and jaw patterns
- Color-coded ring handles for simplified identification
- Disengageable spring for secure cleaning and reprocessing
- Medical grade high-quality stainless steel



Straight Open Surgery Appliers



	Length		Color coding	Item no.
	20 cm / 8"	28 cm / 11"		
Open surgery appliers for small VeSeal™ clips, straight jaws	•		●	AI-321526ETH
Open surgery appliers for small VeSeal™ clips, straight jaws		•	●	AI-321522ETH
Open surgery appliers for medium VeSeal™ clips, straight jaws	•		○	AI-321540ETH
Open surgery appliers for medium VeSeal™ clips, straight jaws		•	○	AI-321542ETH
Open surgery appliers for medium-large VeSeal™ clips, straight jaws	•		●	AI-321550ETH
Open surgery appliers for medium-large VeSeal™ clips, straight jaws		•	●	AI-321555ETH
Open surgery appliers for large VeSeal™ clips, straight jaws		•	●	AI-321558ETH

Right-Angled Open Surgery Appliers

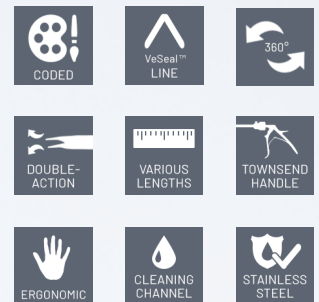


	Color coding	Item no.
Open surgery appliers for small VeSeal™ clips, right angled jaws, 28 cm / 11"	●	AI-321528ETH
Open surgery appliers for medium VeSeal™ clips, right angled jaws, 28 cm / 11"	○	AI-321546ETH
Open surgery appliers for medium-large VeSeal™ clips, right angled jaws, 28 cm / 11"	●	AI-321556ETH
Open surgery appliers for large VeSeal™ clips, right angled jaws, 28 cm / 11"	●	AI-321560ETH

VeSeal™ Endo Surgery Appliers

Key Features

- Solid **double-action jaw mechanism** for extremely precise and reliable closing action
- Precision milled **grooves** inside the jaw for perfect clip fitting
- **No backlash** when activated in addition to tightly tolerated jaw dimensions
- Ergonomic handle design

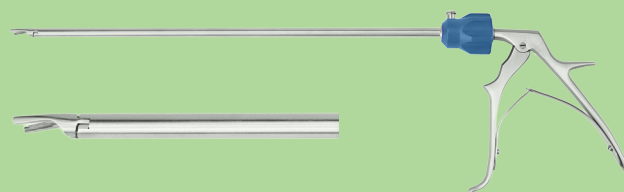


... more Features

- Flush port for validated cleaning and reprocessing
- 360° color coded rotating knob with audio and tactile feedback
- Perfectly weight-balanced
- Bariatric instruments available on request

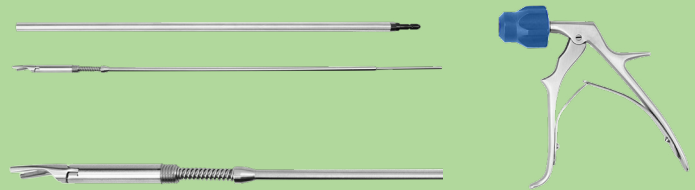


Townsend Handle Appliers for Endo Surgery



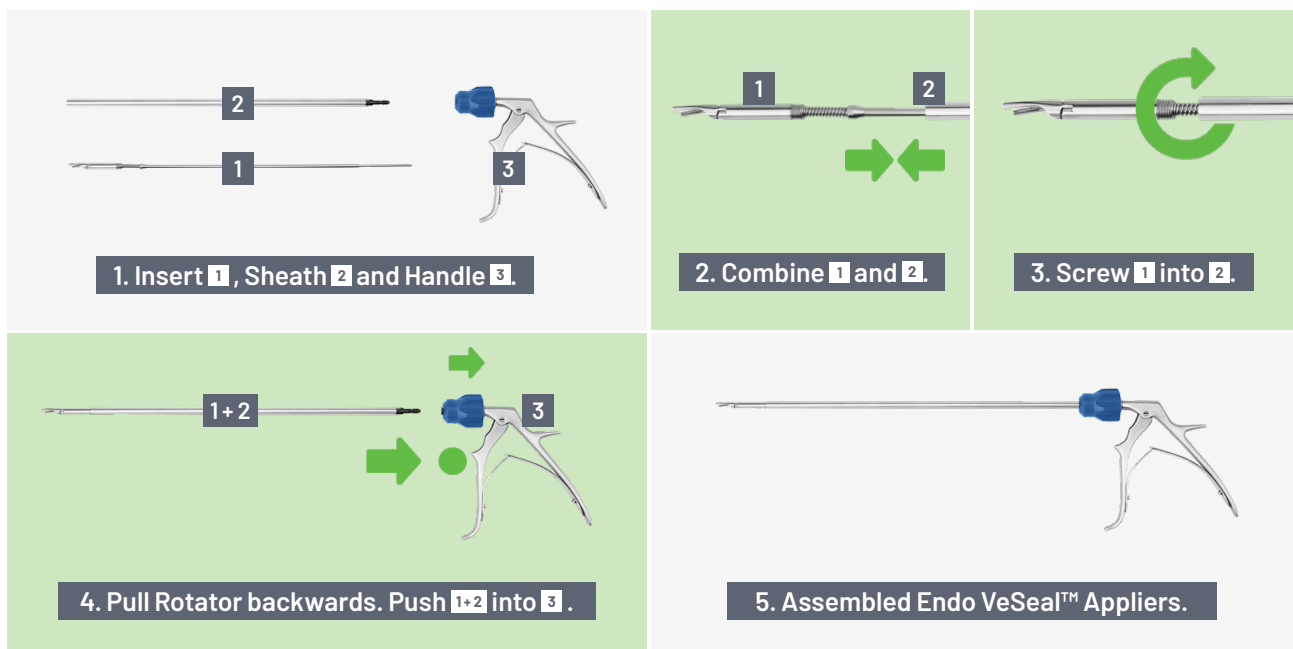
	Diameter			Color coding	Item no.
	Ø 7 mm	Ø 10 mm	Ø 12.5 mm		
Endo Appliers for small VeSeal™ clips, townsend handle, rotatable, 330 mm	•			●	13-1613-102
Endo Appliers for medium VeSeal™ clips, townsend handle, rotatable, 330 mm		•		○	13-1613-103
Endo Appliers for medium-large VeSeal™ clips, townsend handle, rot., 330 mm		•		●	13-1613
Endo Appliers for large VeSeal™ clips, townsend handle, rotatable, 330 mm			•	●	13-1613-104

Detachable Appliers for Endo Surgery



	Diameter			Color coding	Item no.
	Ø 7 mm	Ø 10 mm	Ø 12.5 mm		
Endo Appliers for small VeSeal™ clips, townsend handle, rot., demountable, 330 mm	•			●	13-1613-102Z
Endo Appliers for medium VeSeal™ clips, townsend handle, rot., demountable, 330 mm		•		○	13-1613-103Z
Endo Appliers for medium-large VeSeal™ clips, townsend handle, rot., dem., 330 mm		•		●	13-1613Z
Endo Appliers for large VeSeal™ clips, townsend handle, rot., demountable, 330 mm			•	●	13-1613-104Z

How to assemble detachable Endo Clip Appliers



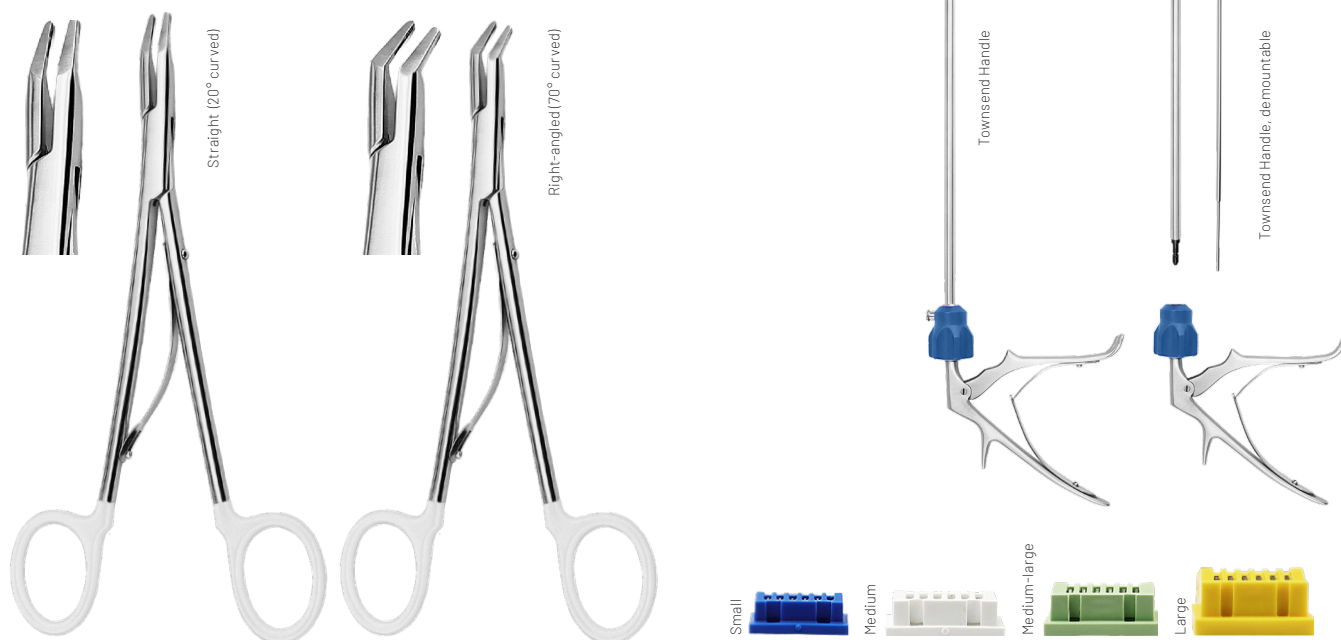
... Key Features

- 3-piece **take-apart system**
- **Quick and intuitive** assembly /disassembly
- **Enhanced cleaning** and reprocessing abilities
- Ergonomic Townsend-handle design
- **No backlash** when activated in addition to tightly tolerated jaw dimensions
- Solid **double-action jaw mechanism** for extremely precise and reliable closing action
- 360° color coded rotating knob with **audio and tactile feedback**
- Perfectly weight-balanced
- Bariatric instruments available on request



VeSeal™ Clips and Appliers

Designs at a Glance



Compatibility Matrix

For VeSeal™ Clips and Appliers

	Color coding of item	Item no.
Small VeSeal™ clips, 108 clips/box	●	AI74CS6ETH
Open surgery appliers for small VeSeal™ clips, straight jaws, 20 cm / 8"	●	AI-321526ETH
Open surgery appliers for small VeSeal™ clips, straight jaws, 28 cm / 11"	●	AI-321522ETH
Open surgery appliers for small VeSeal™ clips, right angled jaws, 28 cm / 11"	●	AI-321528ETH
Endo Appliers for small VeSeal™ clips, townsend handle, rotatable, Ø 7 mm, 330 mm	●	13-1613-102
Endo Appliers for small VeSeal™ clips, townsend handle, rot., demountable, Ø 7 mm, 330 mm	●	13-1613-102Z
Medium VeSeal™ clips, 108 clips/box	○	AI74CM6ETH
Open surgery appliers for medium VeSeal™ clips, straight jaws, 20 cm / 8"	○	AI-321540ETH
Open surgery appliers for medium VeSeal™ clips, straight jaws, 28 cm / 11"	○	AI-321542ETH
Open surgery appliers for medium VeSeal™ clips, right angled jaws, 28 cm / 11"	○	AI-321546ETH
Endo Appliers for medium VeSeal™ clips, townsend handle, rotatable, Ø 10 mm, 330 mm	○	13-1613-103
Endo Appliers for medium VeSeal™ clips, townsend handle, rot., demountable, Ø 10 mm, 330 mm	○	13-1613-103Z

	Color coding of item	Item no.
Medium-large VeSeal™ clips, 108 clips/box	●	AI74CML6ETH
Open surgery appliers for medium-large VeSeal™ clips, straight jaws, 20 cm / 8"	●	AI-321550ETH
Open surgery appliers for medium-large VeSeal™ clips, straight jaws, 28 cm / 11"	●	AI-321555ETH
Open surgery appliers for medium-large VeSeal™ clips, right angled jaws, 28 cm / 11"	●	AI-321556ETH
Endo Appliers for medium-large VeSeal™ clips, townsend handle, rot., Ø 10 mm, 330 mm	●	13-1613
Endo Appliers for medium-large VeSeal™ clips, townsend handle, rot., dem., Ø 10 mm, 330 mm	●	13-1613Z
Large VeSeal™ clips, 108 clips/box	●	AI74CL6ETH
Open surgery appliers for large VeSeal™ clips, straight jaws, 28 cm / 11"	●	AI-321558ETH
Open surgery appliers for large VeSeal™ clips, right angled jaws, 28 cm / 11"	●	AI-321560ETH
Endo Appliers for large VeSeal™ clips, townsend handle, rotatable, Ø 10 mm, 330 mm	●	13-1613-104
Endo Appliers for large VeSeal™ clips, townsend handle, rot., demountable, Ø 10 mm, 330 mm	●	13-1613-104Z



Polyclip™ Non-Absorbable Polymer Clips

Key Features

- **Unique integrated ridges** to prevent slippage
- **Flexible hinge** design for easy insertion and removal if needed
- Secure locking mechanism with **tactile and audible feedback**
- Non-absorbable, **fully biocompatible** polymer material



... more Features

- Cool ligation, radiolucent without interference with CT, MRI or X-ray
- Ideal for both laparoscopic and open surgery cases
- Color-coded cartridges matching the appliers
- Adhesive at the back of the cartridge for easy fixation providing precise handling

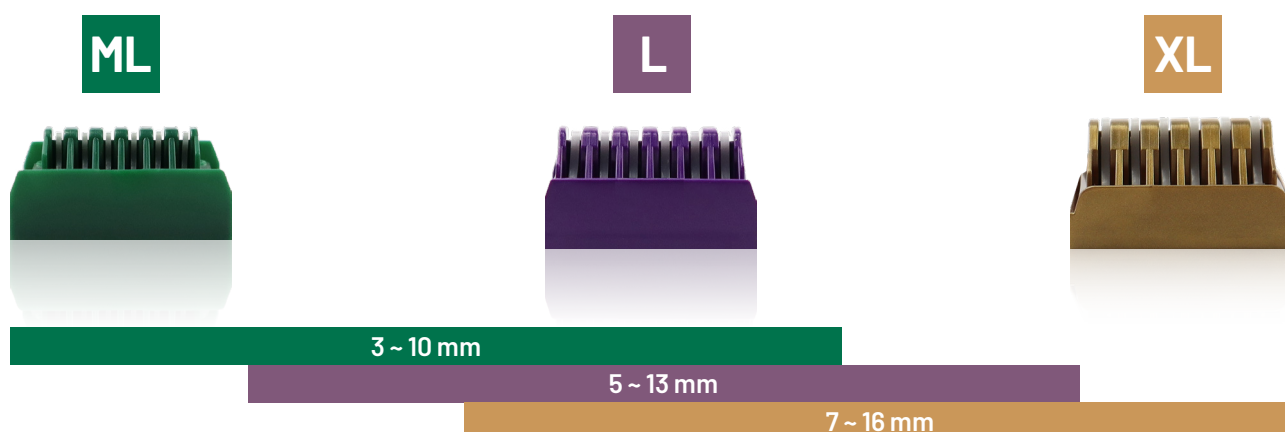


Polyclip™ Non-Absorbable Clips



	Colour coding	Item no.
Medium-large Polyclips™, 6 pcs./cartridge, 14 cartridges/box, 84 clips/box	●	AI74CMLP6
Large Polyclips™, 6 pcs./cartridge, 14 cartridges/box, 84 clips/box	●	AI74CLP6
Extra-large Polyclips™, 6 pcs./cartridge, 14 cartridges/box, 84 clips/box	●	AI74CXLP6

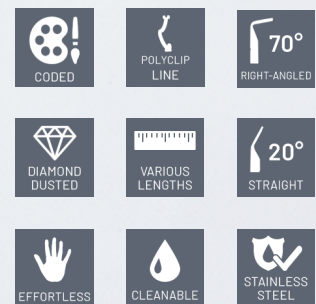
Size Range of Vessel / Tissue Bundle



Polyclip™ Open Surgery Appliers

Key Features

- Well-designed jaws featuring an **anchoring system** to safely and reliably position all industry standard polymer clips
- **Ultra-slim** jaw dimensions for precise positioning
- **Clip removers** available for all clip sizes

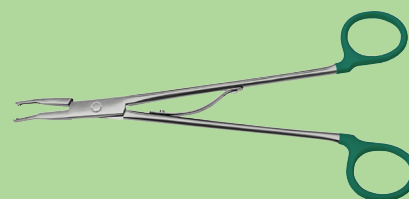


... more Features

- Complete range of different working lengths and jaw patterns
- Color-coded ring handles for simplified identification
- Disengageable spring for secure cleaning and reprocessing
- Medical grade high-quality stainless steel



Straight Open Surgery Appliers



	Length		Color coding	Item no.
	20 cm / 8"	28 cm / 11"		
Open surgery appliers for medium Polyclips™, straight jaws	•		●	AI-321526P
Open surgery appliers for medium Polyclips™, straight jaws		•	●	AI-321522P
Open surgery appliers for medium-large Polyclips™, straight jaws	•		●	AI-321540P
Open surgery appliers for medium-large Polyclips™, straight jaws		•	●	AI-321542P
Open surgery appliers for large Polyclips™, straight jaws	•		●	AI-321550P
Open surgery appliers for large Polyclips™, straight jaws		•	●	AI-321554P
Open surgery appliers for extra-large Polyclips™, straight jaws	•		●	AI-321557P
Open surgery appliers for extra-large Polyclips™, straight jaws		•	●	AI-321558P

Right-Angled Open Surgery Appliers



	Color coding	Item no.
Open surgery appliers for medium Polyclips™, right angled jaws, 28 cm / 11"	●	AI-321528P
Open surgery appliers for medium-large Polyclips™, right angled jaws, 28 cm / 11"	●	AI-321546P
Open surgery appliers for large Polyclips™, right angled jaws, 28 cm / 11"	●	AI-321556P
Open surgery appliers for extra-large Polyclips™, right angled jaws, 28 cm / 11"	●	AI-321560P

Removers for Open Surgery

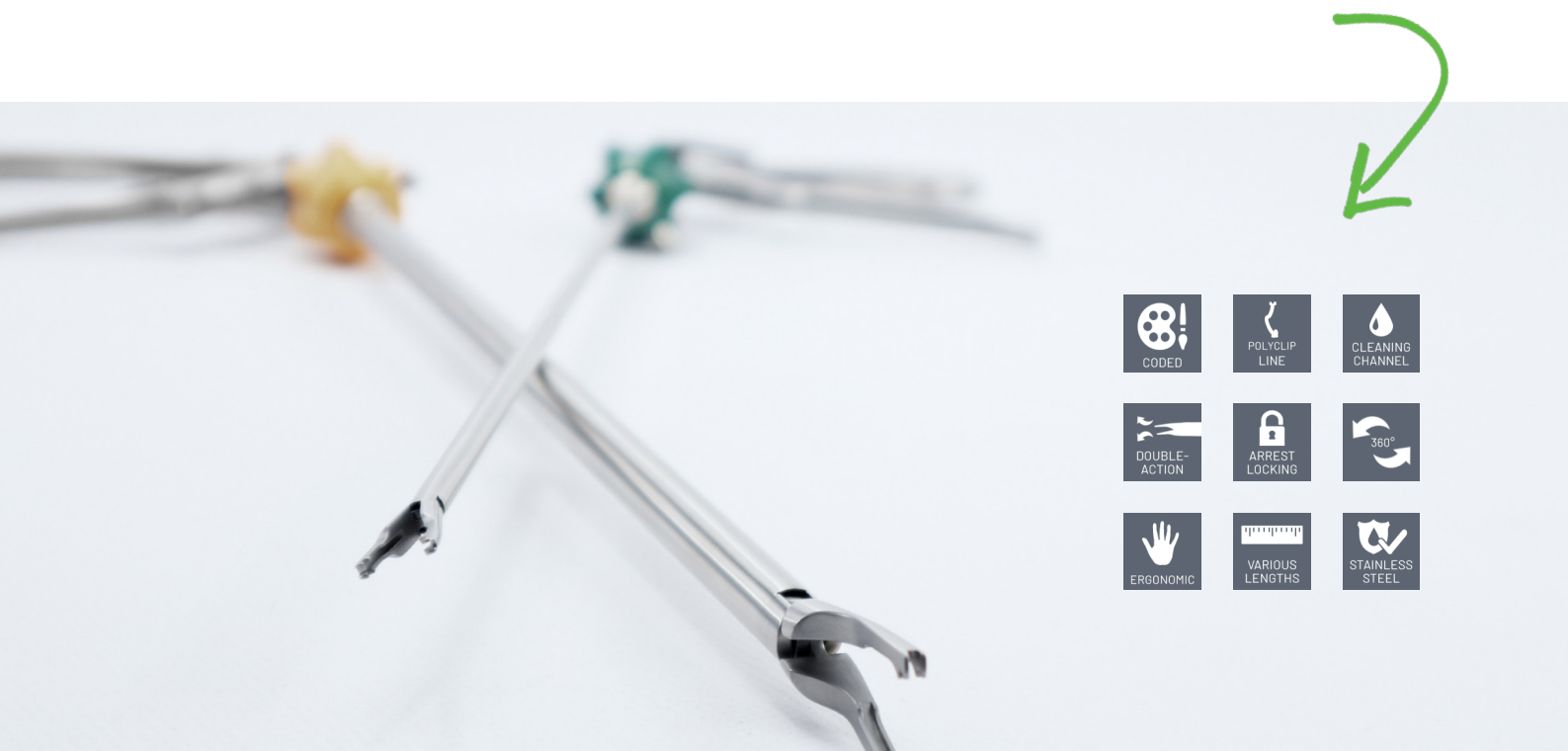


	Item no.
Remover for medium , medium-large and large Polyclips™, 28 cm / 11"	AI-321586P
Remover for large and extra-large Polyclips™, 28 cm / 11"	AI-321587P

Polyclip™ Endo Surgery Appliers

Key Features

- **Unique thumb-operated locking mechanism** integrated into the handle to prevent unintentional clip closure during travel inside the abdomen
- Complete range of Endoscopic appliers and clip removers
- **No backlash** when activated in addition to tightly tolerated jaw dimensions
- Ergonomic handle design

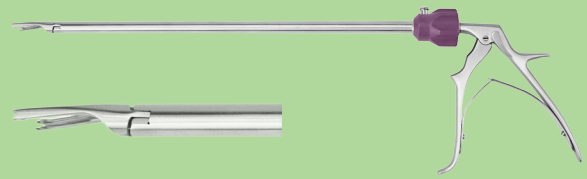


... more Features

- Flush port for validated cleaning and reprocessing
- 360° color coded rotating knob with audio and tactile feedback
- Perfectly weight-balanced
- Bariatric instruments available on request

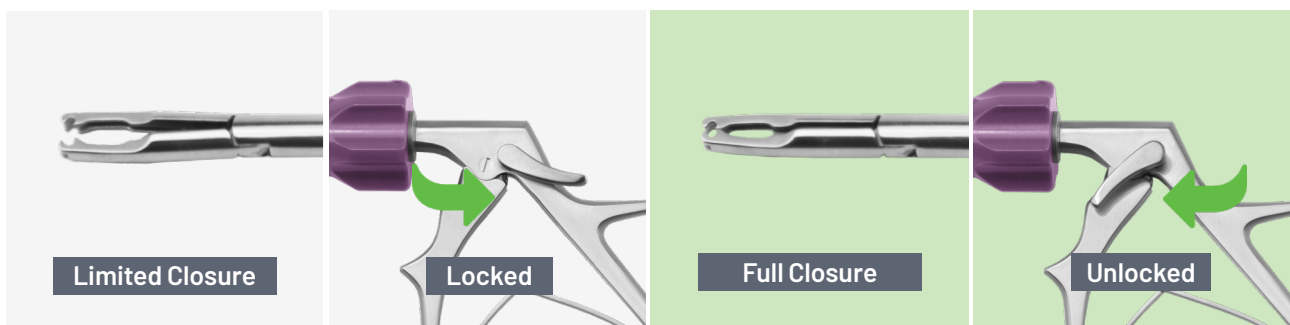


Townsend Handle Appliers for Endo Surgery



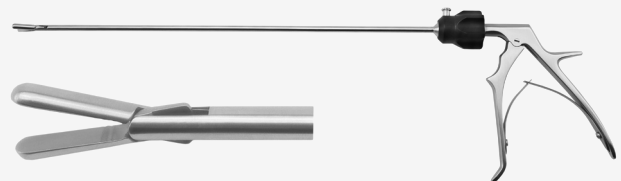
	Diameter		Color coding	Item no.
	Ø 5 mm	Ø 10 mm		
Endo Appliers for med.-large Polyclips™, townsend handle, rotatable, 330 mm	•		●	13-1615AS-P
Endo Appliers for large Polyclips™, townsend handle, rotatable, 330 mm		•	●	13-1613-106AS-P
Endo Appliers for extra-large Polyclips™, townsend handle, rotatable, 330 mm		•	●	13-1613-108AS-P

How to use the Endoscopic Clip Appliers



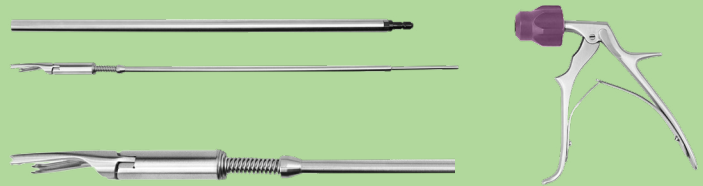
The clip can be inserted into the trocar without risk of unintentional closure.

Townsend Handle Removers for Endo Surgery



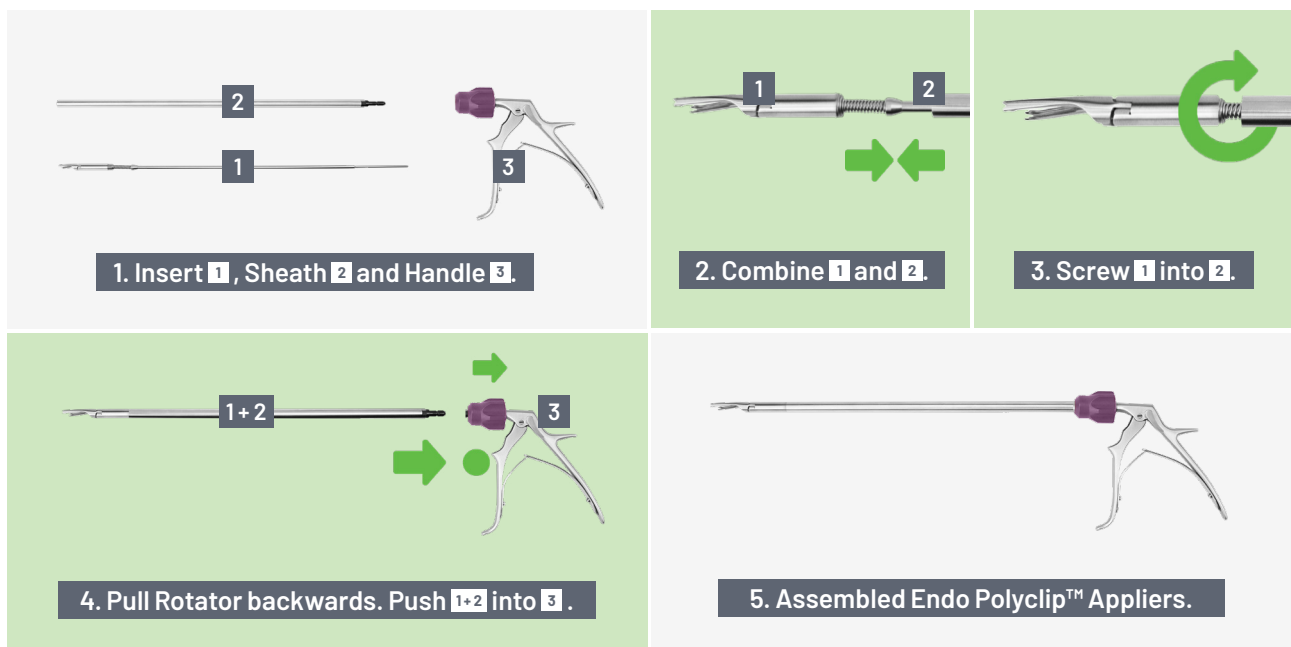
	Item no.
Remover for medium , medium-large and large Polyclips™, Ø 5 mm, 330 mm	13-1613PR
Remover for large and extra-large Polyclips™, Ø 10 mm, 330 mm	13-1615PR

Detachable Appliers for Endo Surgery



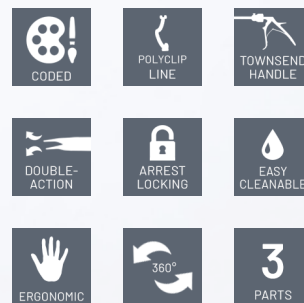
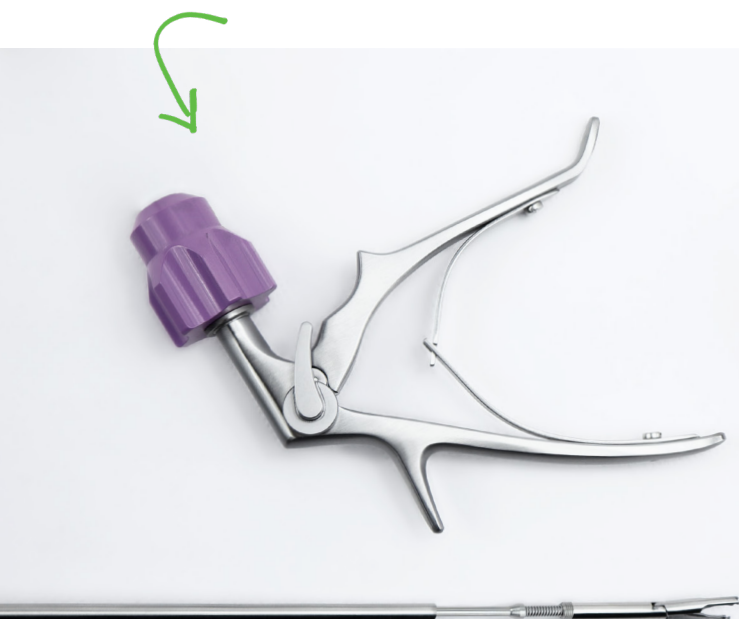
	Diameter		Color coding	Item no.
	Ø 5 mm	Ø 10 mm		
Endo Appliers for med.-large Polyclips™, townsend handle, rot., dem., 330 mm	•		●	13-1615AS-PZ
Endo Appliers for large Polyclips™, townsend handle, rot., dem., 330 mm		•	●	13-1613-106AS-PZ
Endo Appliers for extra-large Polyclips™, townsend handle, rot., dem., 330 mm		•	●	13-1613-108AS-PZ

How to assemble detachable Endo Clip Appliers



... Key Features

- 3-piece **take-apart system**
- **Quick and intuitive** assembly /disassembly
- **Enhanced cleaning** and reprocessing abilities
- Ergonomic Townsend-handle design
- **No backlash** when activated in addition to tightly tolerated jaw dimensions
- Solid **double-action jaw mechanism** for extremely precise and reliable closing action
- 360° color coded rotating knob with **audio and tactile feedback**
- Perfectly weight-balanced
- Bariatric instruments available on request



Detachable Removers for Endo Surgery



Item no.

Remover for **medium, medium-large and large** Polyclips™, rotatable, demountable, Ø 5 mm, 330 mm

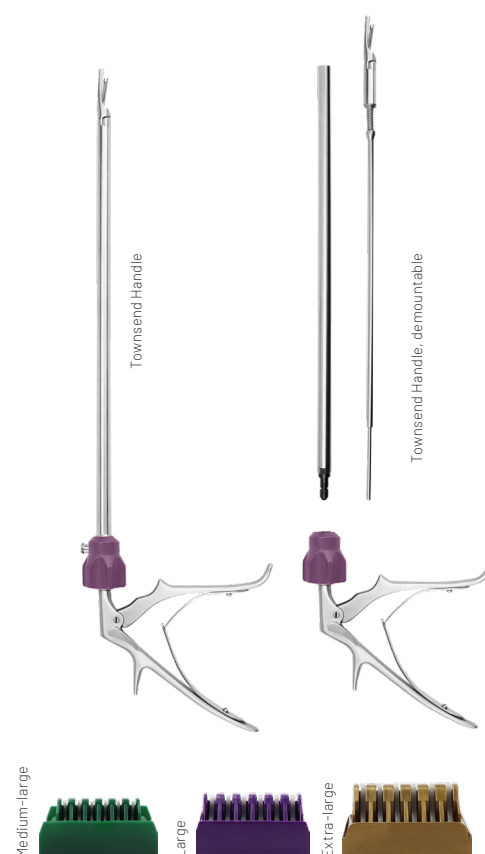
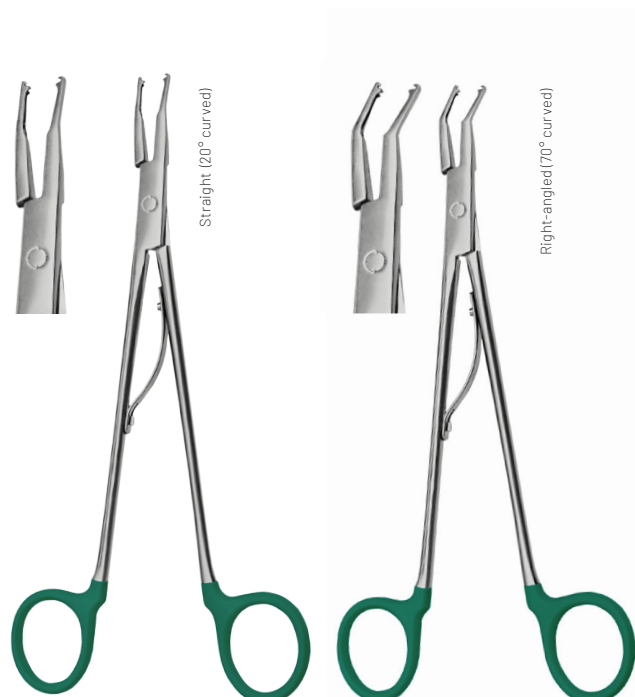
13-1613PRZ

Remover for **large and extra-large** Polyclips™, rotatable, demountable, Ø 10 mm, 330 mm

13-1615PRZ

Polyclips™, Appliers & Removers

Designs at a Glance



Compatibility Matrix

For Polyclips™, Appliers and Removers

	Color coding of item	Item no.
Open surgery appliers for medium Polyclips™, straight jaws, 20 cm / 8"	●	AI-321526P
Open surgery appliers for medium Polyclips™, straight jaws, 28 cm / 11"	●	AI-321522P
Open surgery appliers for medium Polyclips™, right angled jaws, 28 cm / 11"	●	AI-321528P
Medium-large Polyclips™, 84 clips/box	●	AI74CMLP6
Open surgery appliers for medium-large Polyclips™, straight jaws, 20 cm / 8"	●	AI-321540P
Open surgery appliers for medium-large Polyclips™, straight jaws, 28 cm / 11"	●	AI-321542P
Open surgery appliers for medium-large Polyclips™, right angled jaws, 28 cm / 11"	●	AI-321546P
Endo Appliers for med.-large Polyclips™, townsend handle, rotatable, 330 mm	●	13-1615AS-P
Endo Appliers for med.-large Polyclips™, townsend handle, rotatable, demountable, 330 mm	●	13-1615AS-PZ
Large Polyclips™, 84 clips/box	●	AI74CLP6
Open surgery appliers for large Polyclips™, straight jaws, 20 cm / 8"	●	AI-321550P
Open surgery appliers for large Polyclips™, straight jaws, 28 cm / 11"	●	AI-321554P

	Csolor coding of item	Item no.
Open surgery appliers for large Polyclips™, right angled jaws, 28 cm / 11"	●	AI-321556P
Endo Appliers for large Polyclips™, townsend handle, rotatable, 330 mm	●	13-1613-106AS-P
Endo Appliers for large Polyclips™, townsend handle, rotatable, demountable, 330 mm	●	13-1613-106AS-PZ
Extra-large Polyclips™, 84 clips/box	●	AI74CXL6
Open surgery appliers for extra-large Polyclips™, straight jaws, 20 cm / 8"	●	AI-321557P
Open surgery appliers for extra-large Polyclips™, straight jaws, 28 cm / 11"	●	AI-321558P
Open surgery appliers for extra-large Polyclips™, right angled jaws, 28 cm / 11"	●	AI-321560P
Endo Appliers for extra-large Polyclips™, townsend handle, rotatable, 330 mm	●	13-1613-108AS-P
Endo Appliers for extra-large Polyclips™, townsend handle, rotatable, demountable, 330 mm	●	13-1613-108AS-PZ
Remover for medium , medium-large and large Polyclips™, Ø 5 mm, 330 mm	● ● ●	13-1613PR
Remover for medium , medium-large and large Polyclips™, demountable, Ø 5 mm, 330 mm	● ● ●	13-1613PRZ
Remover for large and extra-large Polyclips™, Ø 10 mm, 330 mm	● ●	13-1615PR
Remover for large and extra-large Polyclips™, Ø 10 mm, demountable, 330 mm	● ●	13-1615PRZ



Alphanumeric Index

Item Numbers at a Glance

Numeric Item

13-1610A	11, 15	AI74CLP6	27, 34	AI-321542P	29, 34
13-1610AS	11, 15	AI74CM6	7, 14	AI-321544DD	9, 15
13-1610AZ	12, 15	AI74CM6/24	7, 14	AI-321546DD	9, 15
13-1613	21, 25	AI74CM6-30C	7, 14	AI-321546ETH	19, 24
13-1613-102	21, 24	AI74CM6ETH	17, 24	AI-321546P	29, 34
13-1613-102Z	22, 24	AI74CML6	7, 15	AI-321550DD	9, 15
13-1613-103	21, 24	AI74CML6/24	7, 15	AI-321550ETH	19, 25
13-1613-103Z	22, 24	AI74CML6-30C	7, 15	AI-321550P	29, 34
13-1613-104	21, 25	AI74CML6ETH	17, 25	AI-321552DD	9, 15
13-1613-104Z	22, 25	AI74CMLP6	27, 34	AI-321554DD	9, 15
13-1613-105A	11, 14	AI74CS6	7, 14	AI-321554P	29, 34
13-1613-105AS	11, 14	AI74CS6/24	7, 14	AI-321555ETH	19, 25
13-1613-105AZ	12	AI74CS6-30C	7, 14	AI-321556DD	9, 15
13-1613-106A	11, 15	AI74CS6ETH	17, 24	AI-321556ETH	19, 25
13-1613-106AS	11, 15	AI74CXLP6	27, 35	AI-321556P	29, 35
13-1613-106AS-P	31, 35	AI-321520DD	9, 15	AI-321557P	29, 35
13-1613-106AS-PZ	32, 35	AI-321522DD	9, 15	AI-321558ETH	19, 25
13-1613-106AZ	12, 15	AI-321522ETH	19, 24	AI-321558P	29, 35
13-1613-108AS-P	31, 35	AI-321522P	29, 34	AI-321560ETH	19, 25
13-1613-108AS-PZ	32, 35	AI-321524DD	9, 14	AI-321560P	29, 35
13-1613PR	31, 35	AI-321526DD	9, 15	AI-321586P	29
13-1613PRZ	33, 35	AI-321526ETH	19, 24	AI-321587P	29
13-1613Z	22, 25	AI-321526P	29, 34		
13-1615A	11, 15	AI-321528DD	9, 15		
13-1615AS	11, 15	AI-321528ETH	19, 24		
13-1615AS-P	31, 34	AI-321528P	29, 34		
13-1615AS-PZ	32, 34	AI-321530DD	9, 14		
13-1615AZ	12, 15	AI-321532DD	9, 14		
13-1615PR	31, 35	AI-321534DD	9, 14		
13-1615PRZ	33, 35	AI-321536DD	9, 14		
AI74CL6	7, 15	AI-321540DD	9, 15		
AI74CL6/24	7, 15	AI-321540ETH	19, 24		
AI74CL6-30C	7, 15	AI-321540P	29, 34		
AI74CL6ETH	17, 25	AI-321542DD	9, 15		
		AI-321542ETH	19, 24		



¹Any companies mentioned in this catalogue including their brand names and related products are protected under intellectual property laws. The use of them does not imply any affiliation with or endorsement by them.

²Specifications, design and accessories in this catalogue are subject to change without any notice or obligation on the part of the manufacturer.

Copyright by Ackermann Instrumente GmbH. All rights reserved. Specifications, design and accessories in this catalogue are subject to change without any notice or obligation on the part of the manufacturer. No part may be copied or reproduced in any form. Revision 04/22



www.ackermannsurgical.com



Ackermann Instrumente GmbH
Eisenbahnstrasse 65-67
78604 Rietheim-Weilheim, Germany